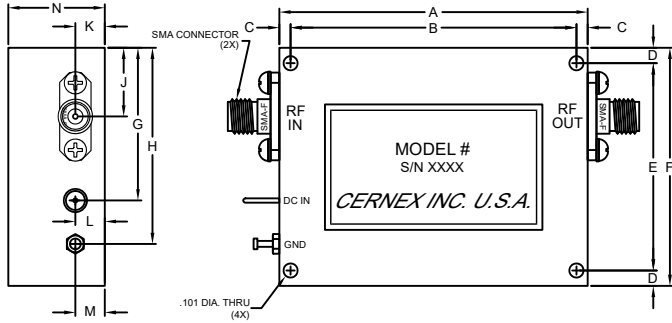


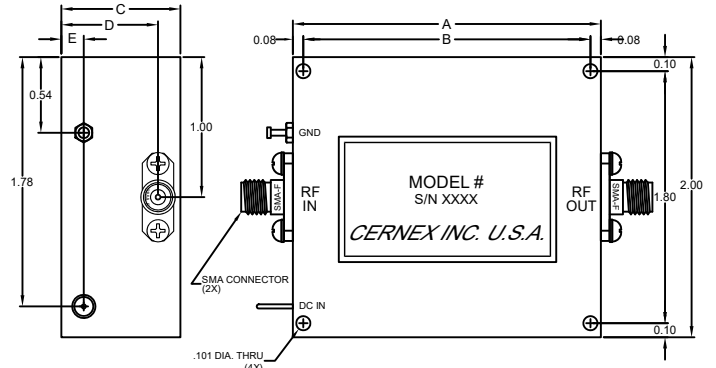
SN Series



CASE TYPE	DIMENSIONS												
	A	B	C	D	E	F	G	H	J	K	L	M	N
SN8	2.20	2.04	.08	.11	1.48	1.70	1.09	1.40	.49	.20	.20	.20	.60
SN9	2.44	2.27	.09	.11	1.48	1.70	1.09	1.40	.49	.20	.20	.20	.60
SN10	2.66	2.49	.09	.11	1.48	1.70	1.09	1.40	.49	.20	.20	.20	.60
SN8-1	2.20	2.04	.08	.11	1.48	1.70	1.09	1.40	.49	.20	.20	.20	.60
SN8B-1	2.22	2.02	.10	.10	1.80	2.00	1.43	1.83	.66	.25	.17	.38	.60
SN12I	3.12	2.88	.12	.12	2.06	2.30	1.65	1.26	.75	.23	.16	.48	.60
SN14-1	3.54	3.30	.12	.12	2.06	2.30	1.65	1.26	.75	.23	.19	.48	.85

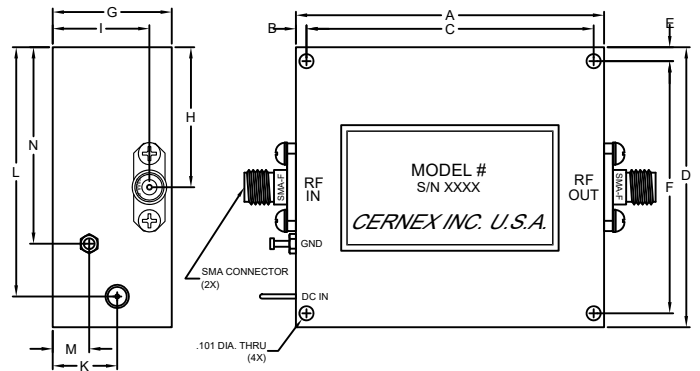
* DIMENSIONS G, H, L, M ARE ON THE RIGHT SIDE OF SN8B-1.

DN Series



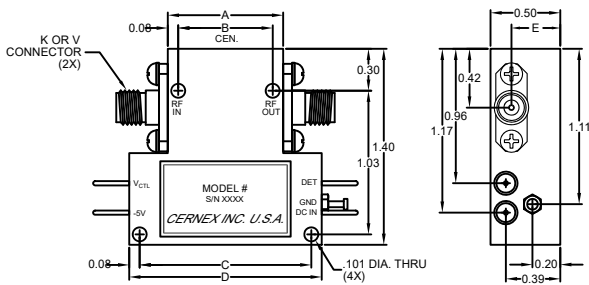
CASE TYPE	DIMENSION				
	A	B	C	D	E
DN8	2.20	2.05	0.85	0.69	0.16
DN10	2.65	2.50	0.85	0.69	0.16
DN12	3.10	2.95	0.85	0.69	0.16
DN14	3.54	3.39	0.75	0.62	0.13

DNX-1 Series

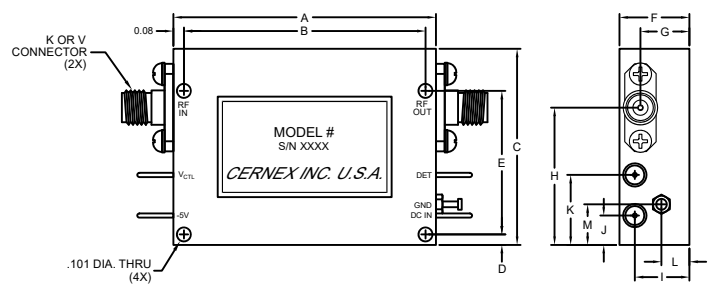


CASE TYPE	DIMENSIONS												
	A	B	C	D	E	F	G	H	I	K	L	M	N
DN8-1	2.20	.08	2.05	2.00	.10	1.80	.85	1.00	.69	.16	1.78	.16	.54
DN10-1	2.65	.08	2.50	2.00	.10	1.80	.85	1.00	.69	.16	1.78	.16	.54
DN12-1	3.10	.06	2.98	2.81	.10	2.61	.75	1.00	.62	.59	2.46	.44	1.96
DN14-1	3.54	.06	3.42	2.81	.10	2.61	.75	1.00	.62	.59	2.46	.44	1.96

FK and FV Series



CASE TYPE	DIMENSIONS				
	A	B	C	D	E
FK2	.83	.67	1.23	1.38	.34
FV2	.83	.67	1.23	1.38	.34



CASE TYPE	DIMENSIONS												
	A	B	C	D	E	F	G	H	I	J	K	L	M
FK3	1.54	1.39	1.33	.10	.98	.40	.25	.96	.28	.23	.46	.12	.33
FK4	1.88	1.73	1.40	.08	1.03	.50	.35	.98	.39	.21	.50	.20	.29
FV4	1.88	1.73	1.40	.08	1.03	.50	.35	.98	.39	.21	.50	.20	.29

TOLERANCES: .XX ±.01