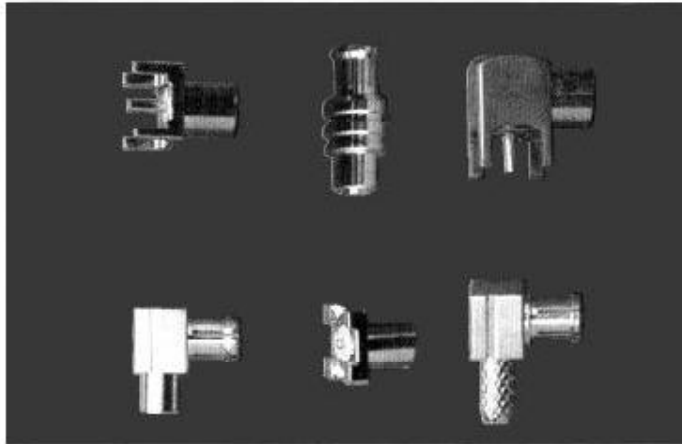


**SERIES MCX  
REVERSE POLARITY RF COAXIAL CONNECTORS**



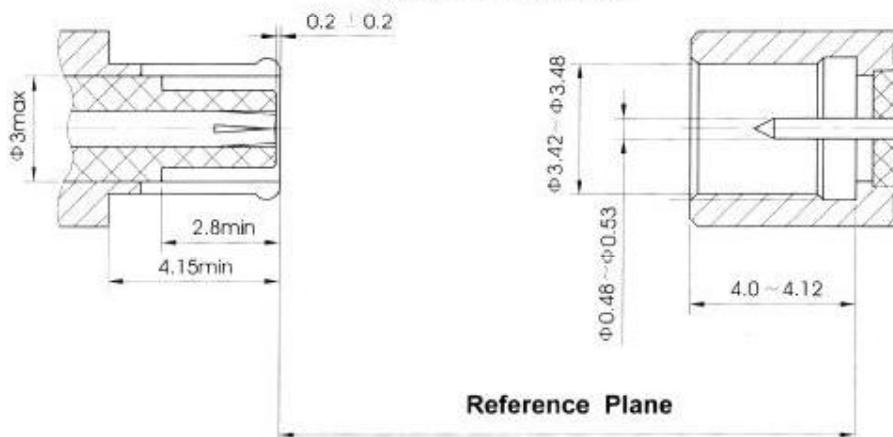
**Key performance**

Characteristic Impedance : 50 Ω  
 Frequency range : 0~6 GHz  
 Contact resistance :  
     Center conductor   ≲ 4.0m Ω  
     Out conductor      ≲ 2.0m Ω  
 Insulation resistance : ≳ 1000M Ω  
 Insulator voltage withstanding : 750V  
 Connector durability : 500 cycles  
**Applicable spec/std: MIL-STD-202**

**Material**

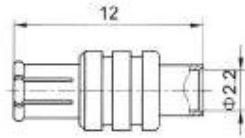
Center contacts:  
     Male---brass, gold plated.  
     Female---beryllium copper, gold plated  
 Bodies and other metal parts:  
     brass, gold plated  
 Insulators: Teflon  
 Crimp ferrule: copper, nickel plated.  
 Gasket and seal rings: silicone rubber  
 Heat-shrink tubing: thermofit plastic.

**Interface Dimensions**

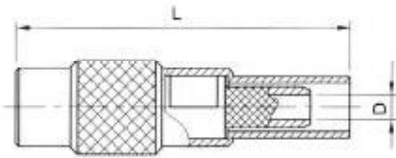


# REVERSE POLARITY MCX

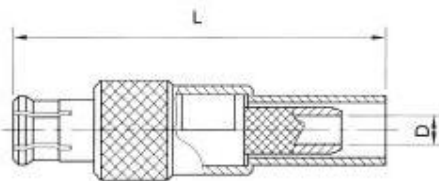
# CERNEXWAVE



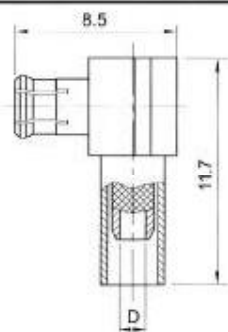
Type	part number	suitable cable	Note
MCX-FKB2	8020-6601	B2	



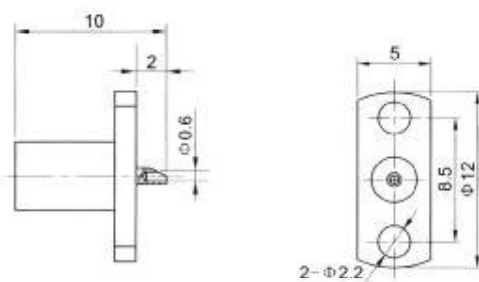
Type	part number	suitable cable	L	D	Note
MCX-FJ2	8010-6501	2	21.8	$\phi 0.9$	
MCX-FJ3	8010-6502	3	23.3	$\phi 1.6$	



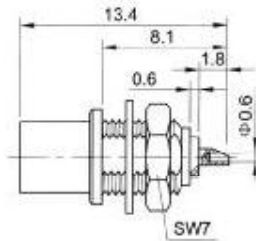
Type	part number	suitable cable	L	D	Note
MCX-FK2	8020-6501	2	19.5	$\phi 0.9$	
MCX-FK3	8020-6502	3	20.5	$\phi 1.6$	



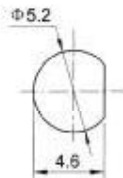
Type	part number	suitable cable	Note
MCX-FKW3	8040-6501	3	



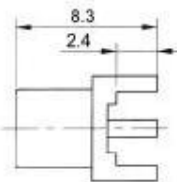
Type	part number	Note
MCX-FJF	8010-1901	



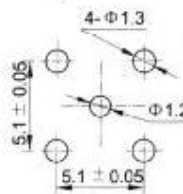
mounting hole



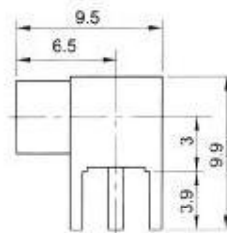
Type	part number	Note
MCX-FJY	8010-2901	



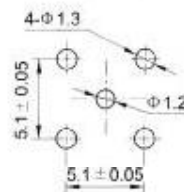
mounting hole



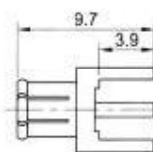
Type	part number	Note
MCX-FJHD	8010-5801	



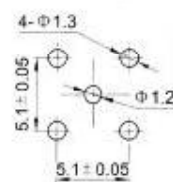
mounting hole



Type	part number	Note
MCX-FJWHD	8030-5801	



mounting hole



Type	part number	Note
MCX-FKHD	8020-5801	