

**SERIES TNCA**

Key performance

Impedance: 50Ω

Frequency: DC-18GHz

VSWR: DC-18GHz... 1.15:1 (max)

Contact Resistance: Center Contact≤1.5mΩ

Housing≤0.2mΩ

Insulation Resistance: ≥5000MΩ

Dielectric Withstanding Voltage: 1500V

Durability: 500 cycle

Temperature Range: -55~+165

Applicable spec/std: MIL-STD-348A

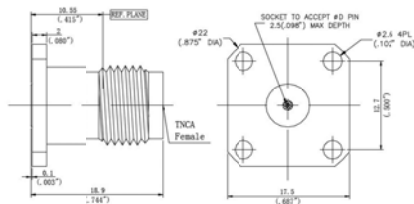
Material

Housing: Stainless Steel SU303 Polished/Passivated

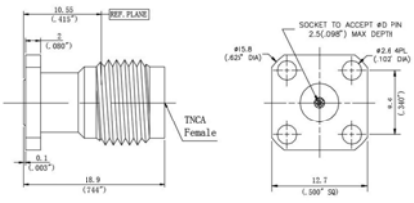
Center Contact: Beryllium Copper

Gold Plated(MIL-G-45204)

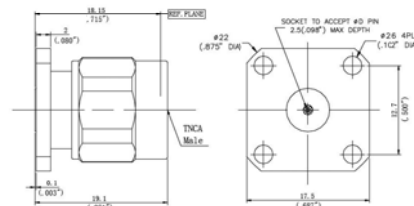
Insulators: PTFE&PEI



| Part number     | ΦD   |
|-----------------|------|
| TNCA-KFD0S18F09 | 0.46 |
| TNCA-KFD0S20F09 | 0.51 |
| TNCA-KFD0S36F09 | 0.51 |



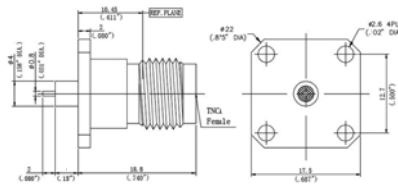
| Part number     | ΦD   |
|-----------------|------|
| TNCA-KFD0S18F01 | 0.46 |
| TNCA-KFD0S20F01 | 0.51 |
| TNCA-KFD0S20F01 | 0.51 |



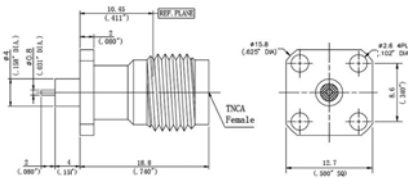
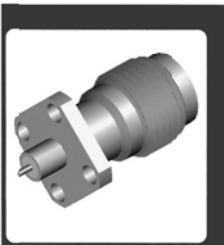
| Part number     | ΦD   |
|-----------------|------|
| TNCA-JFD1S13F09 | 0.46 |
| TNCA-JFD1S20F09 | 0.51 |
| TNCA-JFD1S20F09 | 0.51 |

# TNCA SERIES(DC-18GHz)

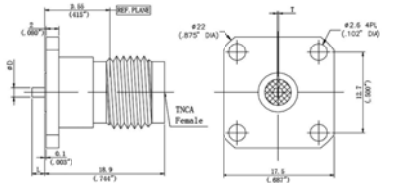
# CERNEXWAVE



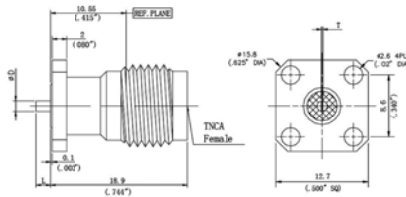
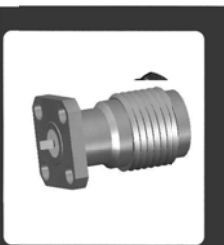
| Part number       | D1 | D2  | L1 | L2 |
|-------------------|----|-----|----|----|
| TNCA-KFD0M0101F09 | 4  | 0.8 | 4  | 2  |



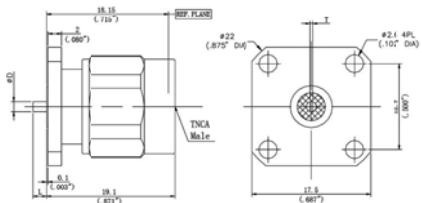
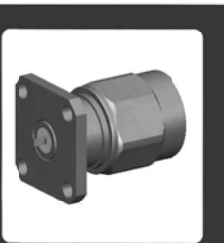
| Part number       | D1 | D2  | L1 | L2 |
|-------------------|----|-----|----|----|
| TNCA-KFD0M0101F01 | 4  | 0.8 | 4  | 2  |



| Part number     | D   | L   | T   |
|-----------------|-----|-----|-----|
| TNCA-KFD0T15F09 | 1.5 | 2.0 | 0.2 |



| Part number     | D   | L   | T   |
|-----------------|-----|-----|-----|
| TNCA-KFD0T15F01 | 1.5 | 2.0 | 0.2 |



| Part number     | D   | L   | T   |
|-----------------|-----|-----|-----|
| TNCA-JFD1T15F09 | 1.5 | 2.0 | 0.2 |