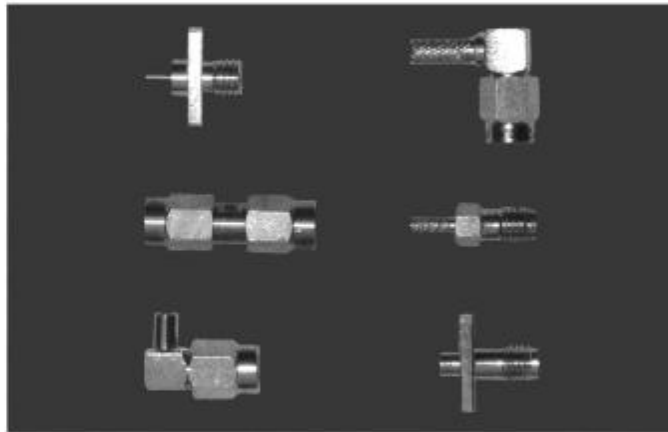


## SERIES SSMA RF COAXIAL CONNECTORS



Series SSMA is the first selection for use in millimeter applications. The size is smaller than SMA series while the structure is similar. The SSMA connector is recommended for use up to 40 GHz.

### Key performance

Characteristic Impedance :  $50 \Omega$

Frequency range : 0~40GHz

Contact resistance :

Center conductor  $\leq 5.0m \Omega$

Out conductor  $\leq 2.50m \Omega$

Insulation resistance :  $\geq 1000M \Omega$

Insulator voltage withstanding : 750V

VSWR :  $\leq 1.07 + 0.04\sqrt{f(\text{GHz})}$

Connector durability : 500 cycles

Applicable spec/std : GJB681A( MIL-C-39012)

### Material

Center contacts:

Male---brass, gold plated.

Female---beryllium copper, gold plated

Bodies and other metal parts:

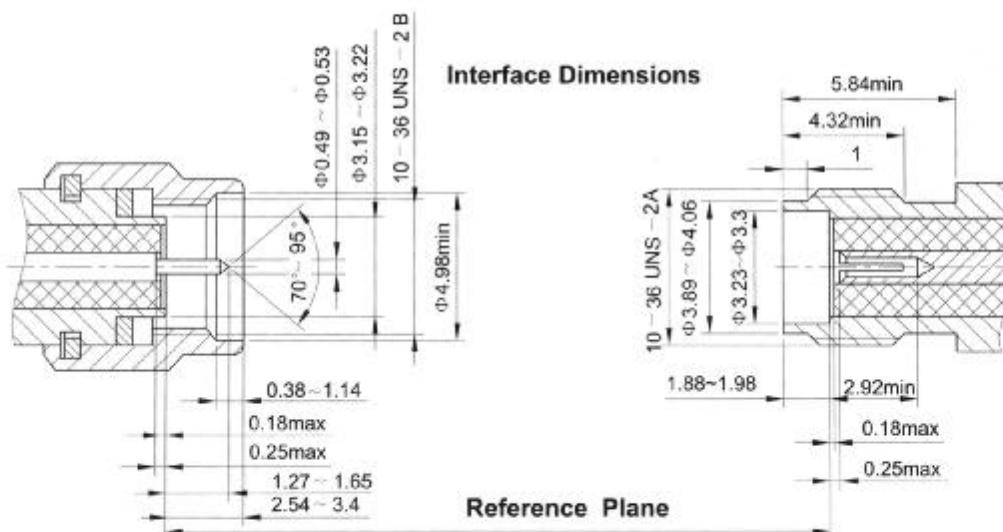
brass, gold plated

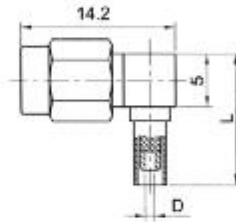
Insulators: Teflon

Crimp ferrule: copper, nickel plated.

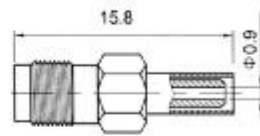
Gasket and seal rings: silicone rubber

Heat-shrink tubing: thermofit plastic.

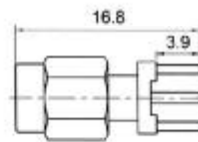




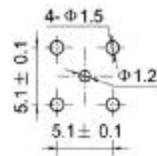
| Type    | part number | suitable cable | L    | D    | Note |
|---------|-------------|----------------|------|------|------|
| SSMA-W2 | 0930-6500   | 2              | 12.3 | Φ0.9 |      |
| SSMA-W3 | 0930-6501   | 3              | 12.9 | Φ1.6 |      |



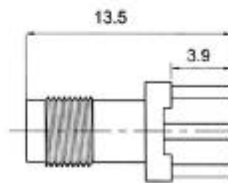
| Type    | part number | suitable cable | Note |
|---------|-------------|----------------|------|
| SSMA-K2 | 0920-6500   | 2              |      |



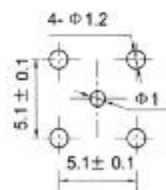
mounting hole



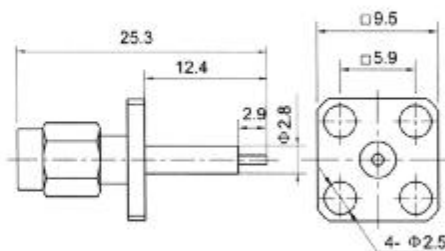
| Type     | part number | Note |
|----------|-------------|------|
| SSMA-JHD | 0910-5800   |      |



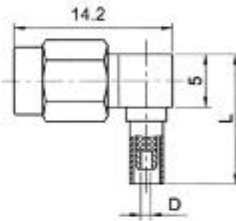
mounting hole



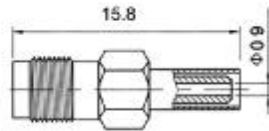
| Type     | part number | Note |
|----------|-------------|------|
| SSMA-KHD | 0920-5800   |      |



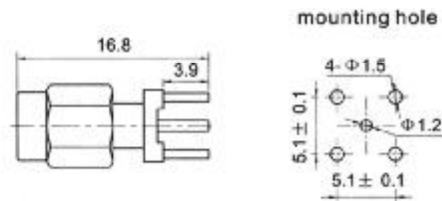
| Type     | part number | Note |
|----------|-------------|------|
| SSMA-JFD | 0910-0000   |      |



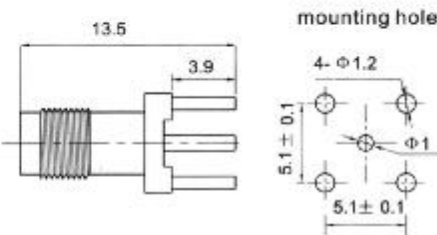
| Type     | part number | suitable cable | L    | D    | Note |
|----------|-------------|----------------|------|------|------|
| SSMA-JW2 | 0930-6500   | 2              | 12.3 | Φ0.9 |      |
| SSMA-JW3 | 0930-6501   | 3              | 12.9 | Φ1.6 |      |



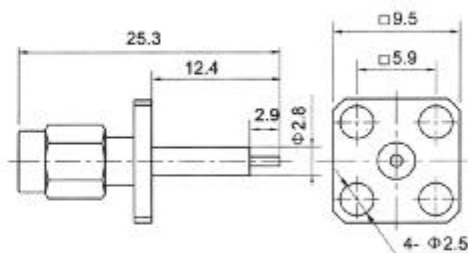
| Type    | part number | suitable cable | Note |
|---------|-------------|----------------|------|
| SSMA-K2 | 0920-6500   | 2              |      |



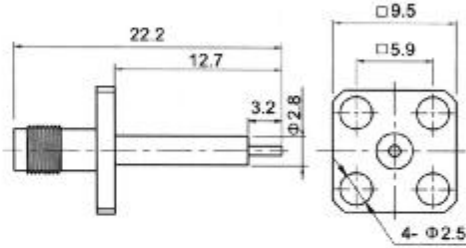
| Type     | part number | Note |
|----------|-------------|------|
| SSMA-JHD | 0910-5800   |      |



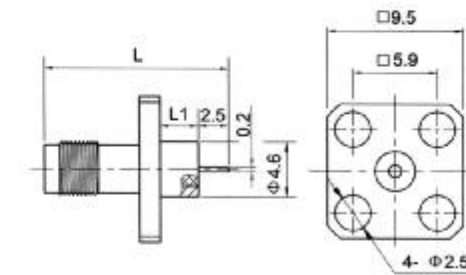
| Type     | part number | Note |
|----------|-------------|------|
| SSMA-KHD | 0920-5800   |      |



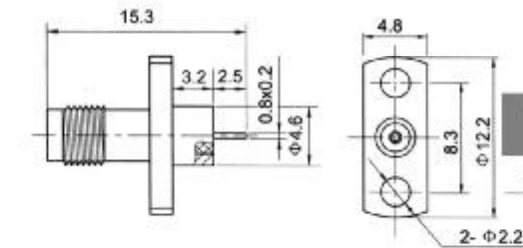
| Type     | part number | Note |
|----------|-------------|------|
| SSMA-JFD | 0910-0000   |      |



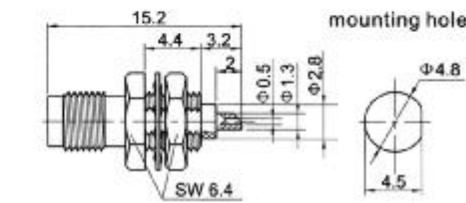
| Type     | part number | Note |
|----------|-------------|------|
| SSMA-KFD | 0920-0000   |      |



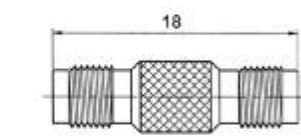
| Type      | part number | L    | L1  | Note |
|-----------|-------------|------|-----|------|
| SSMA-KFD1 | 0920-0001   | 14.3 | 2.4 |      |
| SSMA-KFD2 | 0920-0002   | 15.3 | 3.2 |      |
| SSMA-KFD3 | 0920-0003   | 16.9 | 4.8 |      |



| Type      | part number | Note |
|-----------|-------------|------|
| SSMA-KFD4 | 0920-0004   |      |



| Type     | part number | Note |
|----------|-------------|------|
| SSMA-KYD | 0910-2800   |      |



| Type    | part number | Note |
|---------|-------------|------|
| SSMA-KK | 0900-6900   |      |