

## SERIES L29 (7/16) RF COAXIAL CONNECTORS



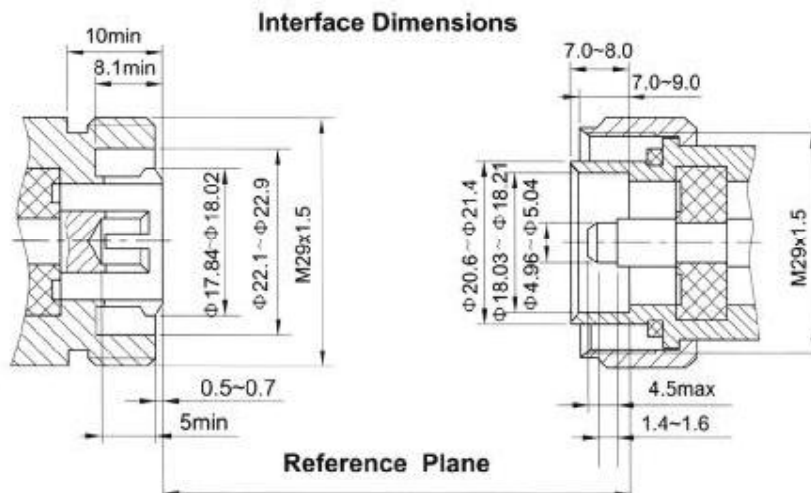
Series L29(7-16) is a screw coupling unit designed specifically to handle high power while suppressing intermodulation products. The L29(7-16) connector is most widely used in communication systems such as mobile phone base stations and radio transceivers.

### Key performance

Characteristic Impedance :  $50 \Omega$   
 Frequency range : 0~7.5GHz  
 Contact resistance :  
     Center conductor  $\leq 1.0m \Omega$   
     Out conductor  $\leq 0.5m \Omega$   
 Insulation resistance :  $\geq 10000M \Omega$   
 Insulator voltage withstanding : 2700V  
 VSWR :  $\leq 1.25$   
 Connector durability : 500 cycles  
**Applicable spec/std : IEC169-4**

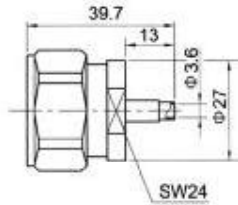
### Material

Center contacts:  
     Male---brass, gold plated.  
     Female---phosphor, gold plated  
 Bodies and other metal parts:  
     brass, nickel or silver plated  
 Insulators: Teflon  
 Crimp ferrule: copper, nickel plated.  
 Gasket and seal rings: silicone rubber  
 Heat-shrink tubing: thermofit plastic.

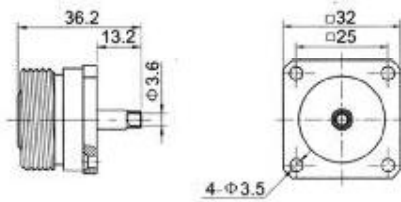


# L29 (7/16) SERIES

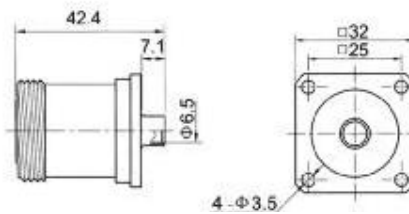
# CERNEXWAVE



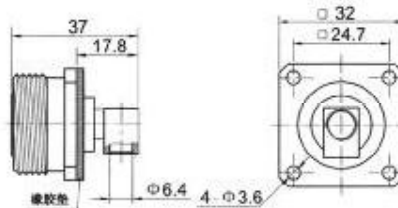
Type	part number	suitable cable	Note
L29-JB3	1212-6601	B3	coupling nut body silver plated



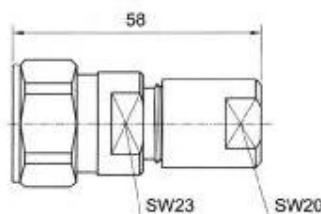
Type	part number	suitable cable	Note
L29-KFB3	1222-1601	B3	body silver plated



Type	part number	suitable cable	Note
L29-KFB5A	1222-1603	B5A	body silver plated



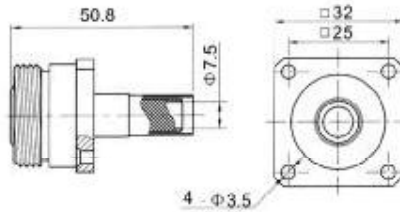
Type	part number	suitable cable	Note
L29-KFWB5A	1246-0001	B5A	Body, SUCO plated
L29-KFWB5A-1	1242-1602	B5A	Body silver plated



Type	part number	suitable cable	Note
L29-J8B	1216-6501	8	coupling nut - body SUCO plated

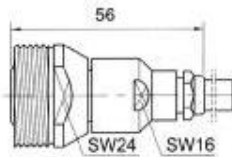
# L29 (7/16) SERIES

# CERNEXWAVE



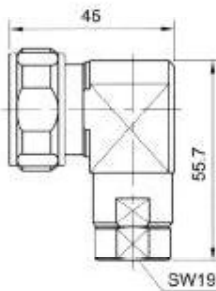
Type part number suitable cable Note

L29-KF213	1221-1701	7	body nickel plated
-----------	-----------	---	--------------------



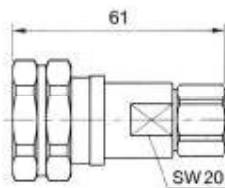
Type part number suitable cable Note

L29-K501	1222-6701	501	body nickel plated center conductor ,without solder
L29-K511	1221-6702	511	body nickel plated center conductor ,without solder



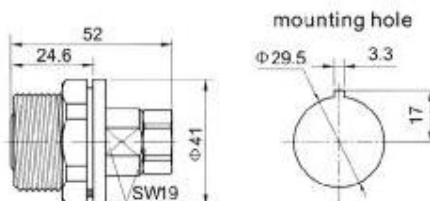
Type part number suitable cable Note

L29-JW533	1232-6701	533	coupling nut/body silver plated center conductor ,without solder
-----------	-----------	-----	---



Type part number suitable cable Note

L29-J533A	1212-6702	533	body ,silver plated coupling nut. nut. nickel plated center conductor ,without solder
-----------	-----------	-----	---

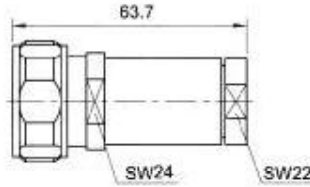


Type part number suitable cable Note

L29-KY533	1212-6702	533	body ,silver plated center conductor ,without solder
-----------	-----------	-----	---

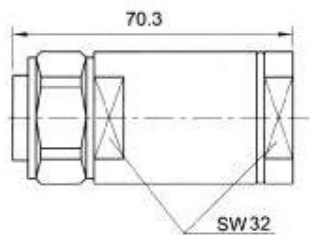
# L29 (7/16) SERIES

# CERNEXWAVE



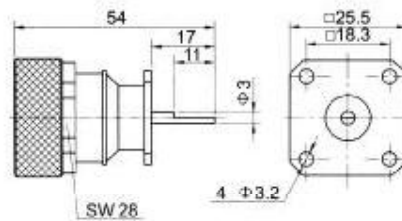
Type part number suitable cable Note

L29-J534 1211-6701 534 coupling nut, nut, silver plated  
body nickel plated



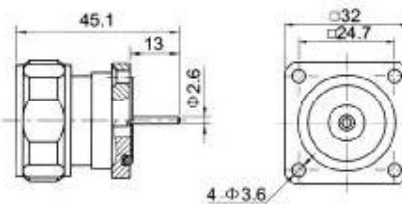
Type part number suitable cable Note

L29-J554 1211-6703 554 coupling nut/body nickel plated  
silver plated



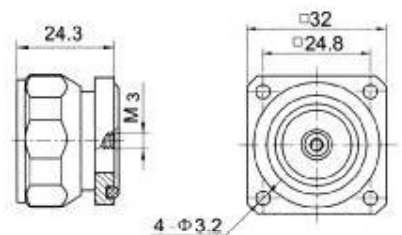
Type part number suitable cable Note

L29-JFD5 1211-0005 coupling nut/body nickel plated



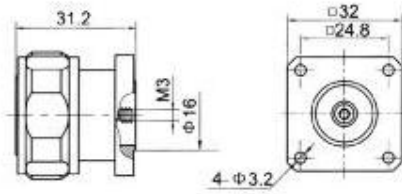
Type part number suitable cable Note

L29-JFD10 1211-0010 coupling nut - body, SUCO plated



Type part number suitable cable Note

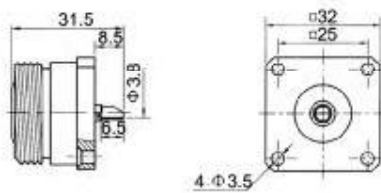
L29-JFD12 1212-0001 body, silver plated  
coupling nut, nickel plated



Type part number suitable cable Note

L29-JFD14 1212-0002

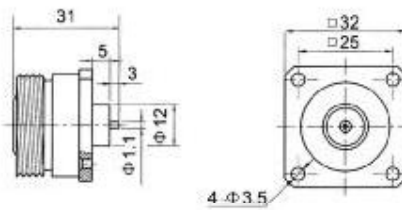
body ,silver plated  
coupling nut, nickel plated



Type part number suitable cable Note

L29-KF 1221-1901

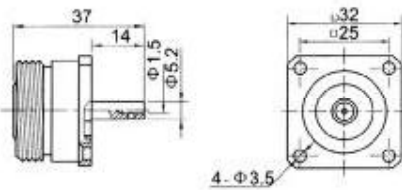
body ,nickel plated



Type part number suitable cable Note

L29-KFD 1221-0001

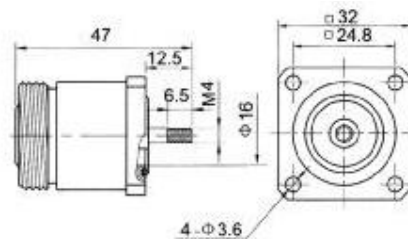
body ,nickel plated



Type part number suitable cable Note

L29-KFD2 1202-0002

body ,silver plated



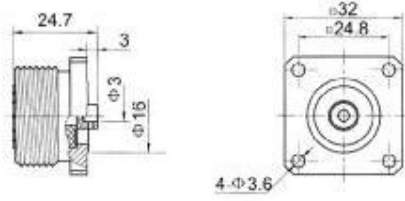
Type part number suitable cable Note

L29-KFD5 1222-0005

silver plated

# L29 (7/16) SERIES

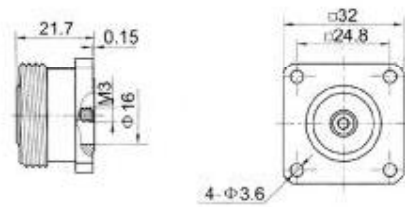
# CERNEXWAVE



Type part number suitable cable Note

L29-KFD20 1211-0001

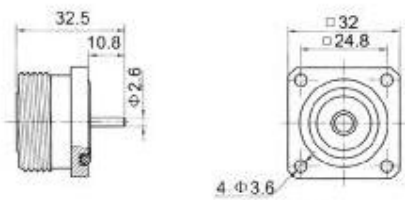
steel flange body  
SUCO plated



Type part number suitable cable Note

L29-KFD21 1226-0003

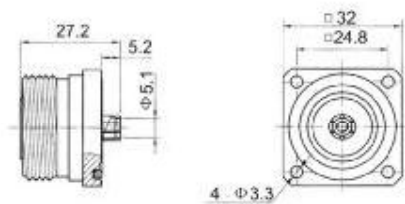
SUCO plated



Type part number suitable cable Note

L29-KFD23 1226-0004

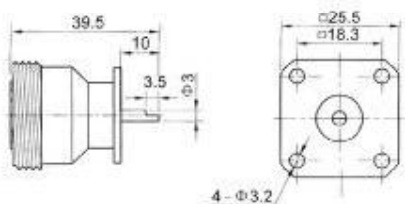
Body, SUCO plated



Type part number suitable cable Note

L29-KFD24 1222-0010

body ,silver plated



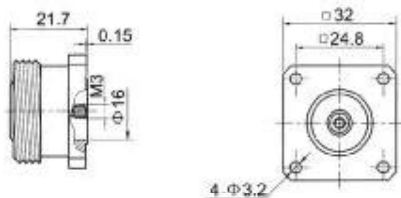
Type part number suitable cable Note

L29-KFD25 1221-0014

body nickel plated

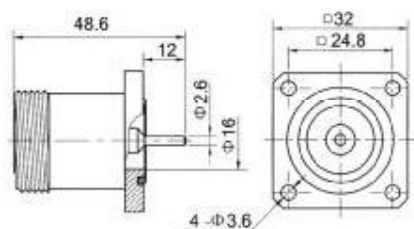
# L29 (7/16) SERIES

# CERNEXWAVE



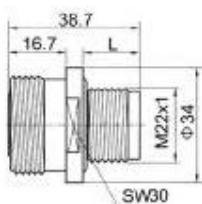
Type part number suitable cable Note

L29-KFD26	1222-0010	silver plated
-----------	-----------	---------------



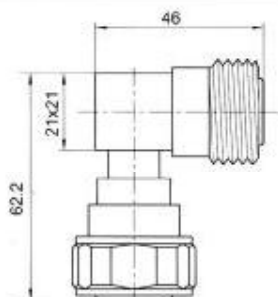
Type part number suitable cable Note

L29-KFD28	1226-0005	body, SUCO plated
-----------	-----------	-------------------



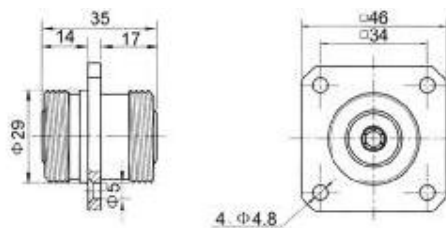
Type part number suitable cable L Note

L29-KYD1	1222-2801	17	silver plated
L29-KYD1A	1222-2802	17.2	silver plated



Type part number suitable cable Note

L29-JWK	1202-6904	Body/coupling, silver plated
---------	-----------	------------------------------



Type part number suitable cable Note

L29-KFX1	1201-1901	nickel plated
----------	-----------	---------------