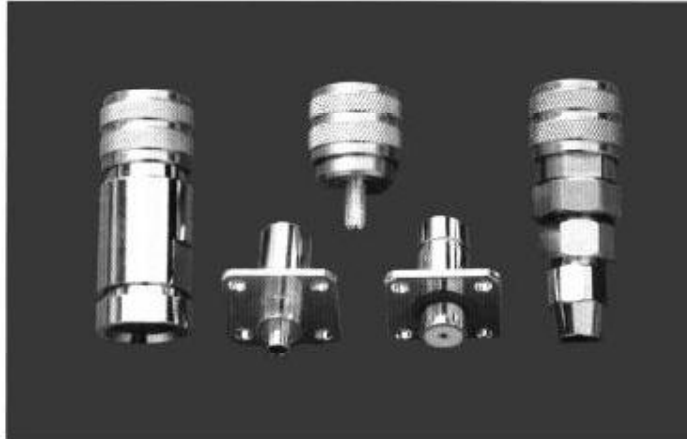


SERIES J.CC11 (CCWX) RF COAXIAL CONNECTORS



Series J.CC11 is a push-pull self-latching style middle-power RF coaxial connector. The advantages are high vibration-proof, reliable connection, excellent mechanical and electrical performance. It is mainly used in military weapon systems. CCWX is improved from CC11, can cross-over with CC11, has ability of interface self-adopting, the phase of connection is much more stability and the electrical performance is also improved.

Key performance

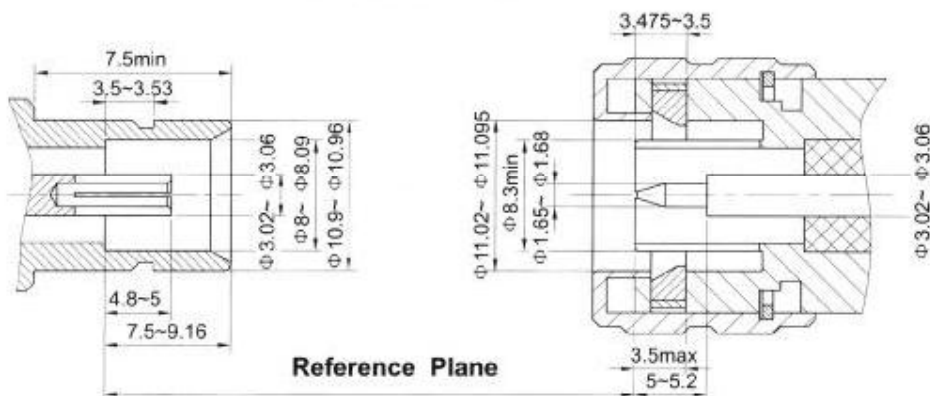
Characteristic Impedance : 50Ω
 Frequency range : 0~6GHz
 Contact resistance :
 Center conductor $\leq 1.5m \Omega$
 Out conductor $\leq 0.2m \Omega$
 Insulator voltage withstanding : 1500V
 VSWR :
 straight ≤ 1.30
 right angle ≤ 1.40
 Connector durability : 500 cycles

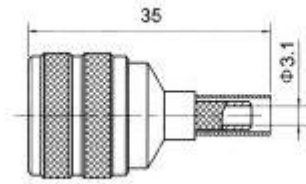
Applicable spec/std : J.Q/FD2002-09

Material

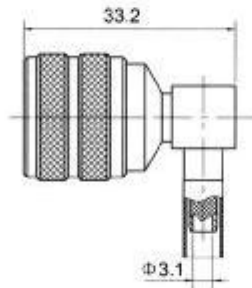
Center contacts:
 Male---brass, gold plated.
 Female---phosphor bronze, gold plated
 Bodies and other metal parts:
 brass, nickel plated
 Insulators: Teflon
 Crimp ferrule: copper, nickel plated.
 Gasket and seal rings: silicone rubber
 Heat-shrink tubing: thermofit plastic

Interface Dimensions

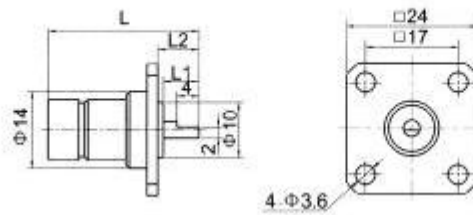




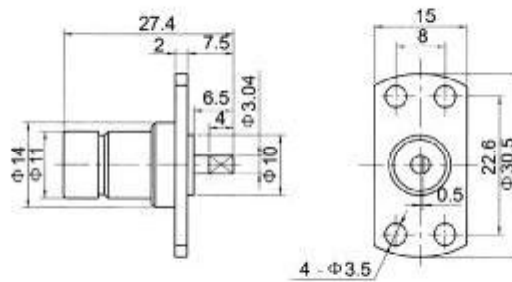
Type	part number	suitable cable	Note
J.CC11-J5YAG	1714-6501	5A	coupling nut, stainless steel



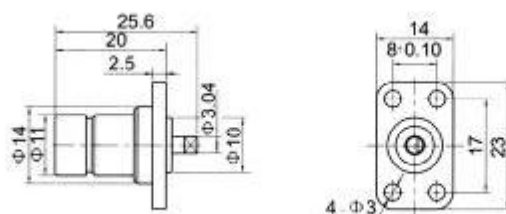
Type	part number	suitable cable	Note
J.CC11-JW5YAG	1731-6500	5A	coupling nut, stainless steel



Type	part number	L	L1	L2	Note
J.CC11-KFD-1	1721-0001	27.5	6.5	7.5	
J.CC11-KFD-2	1721-0002	28.5	7.5	8.5	



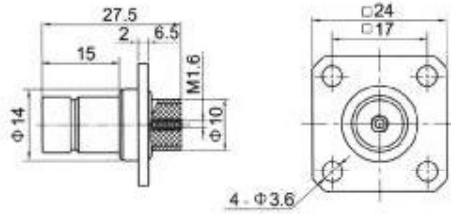
Type	part number	Note
J.CC11-KFD-3	1721-0003	



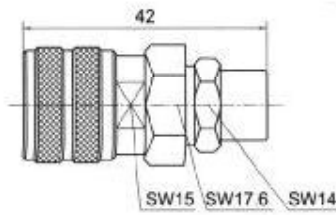
Type	part number	Note
J.CC11-KFD12	1721-0004	

J.CC11(CCWX) SERIES

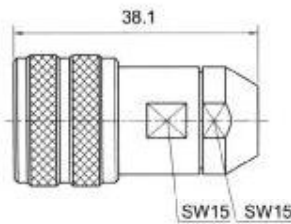
CERNEXWAVE



Type	part number	suitable cable	Note
J.CC11-KFD3	1721-0005		



Type	part number	suitable cable	Note
J.CC11(CCWX)-J501G	26141-6701	501	coupling nut, stainless steel



Type	part number	suitable cable	Note
J.CCWX-J610G	26141-6501	610	coupling nut, stainless steel