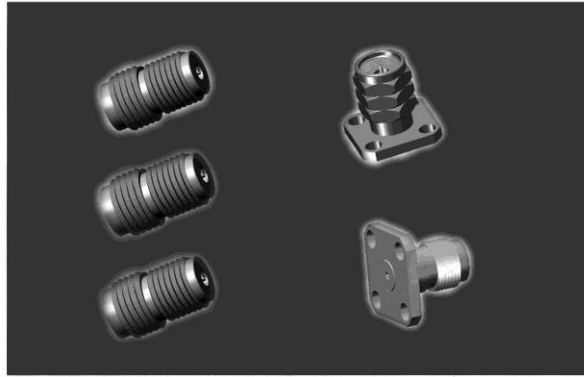


**SERIES 1.85mm
RF COAXIAL CONNECTORS**



1.85mm connectors are 50Ω precision connectors. They are designed with excellent characteristics over the full frequency range up to 65GHz. 1.85mm connectors are mechanically compatible with 2.4mm connectors.

Key performance

Characteristic Impedance : 50 Ω
 Frequency range : DC-65GHz
 Contact resistance :
 Center Contact ≤ 3.0mΩ
 Housing ≤ 2.5mΩ
 Insulation resistance : ≥ 3000MΩ
 Insulator voltage withstanding : 500V
 VSWR :
 DC-65GHz.... 1.25:1 (max)

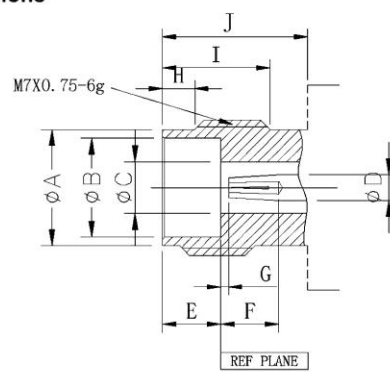
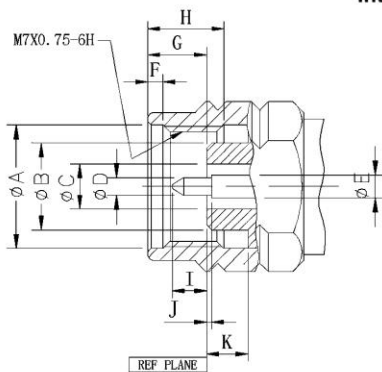
Material

Housing: Stainless Steel SU303 Polished/Passivated
 Center Contact: Beryllium Copper
 Gold plated (MIL-G-45204)
 Insulators: PEI

Connector durability : 500 cycles

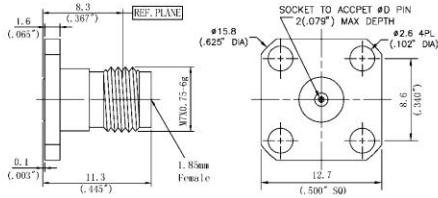
Interfaces: PER IEC-61169

Interface Dimensions

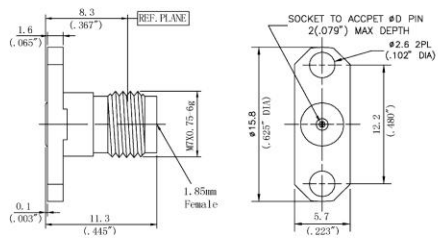


1.85MM SERIES

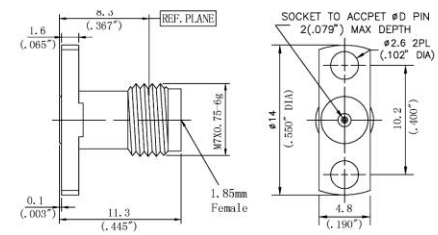
CERNEXWAVE



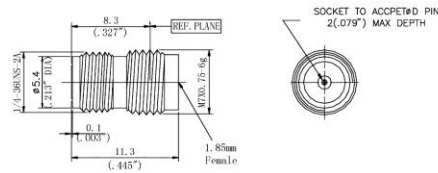
Part number	ΦD
1.85-KFD0S09F01	0.23
1.85-KFD0S12F01	0.30



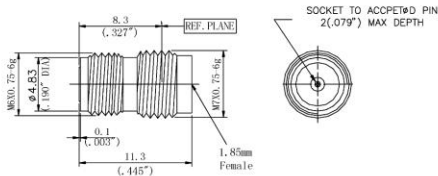
Part number	ΦD
1.85-KFD0S09F04	0.23
1.85-KFD0S12F04	0.30



Part number	ΦD
1.85-KFD0S09F05	0.23
1.85-KFD0S12F05	0.30



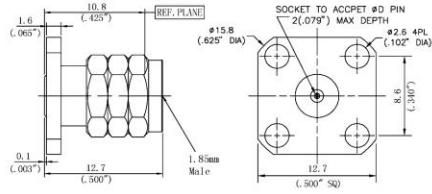
Part number	ΦD
1.85-KYB0S09Y01	0.23
1.85-KYB0S12Y01	0.30



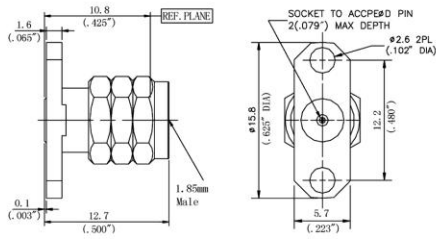
Part number	ΦD
1.85-KYB0S09Y02	0.23
1.85-KYB0S12Y02	0.30

1.85MM SERIES

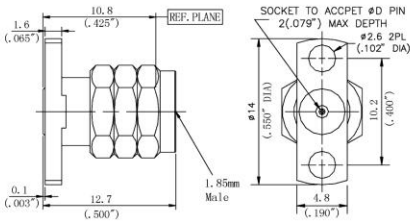
CERNEXWAVE



Part number	ΦD
1.85-JFD1S09F01	0.23
1.85-JFD1S12F01	0.30



Part number	ΦD
1.85-JFD1S09F04	0.23
1.85-JFD1S12F04	0.30



Part number	ΦD
1.85-JFD1S09F05	0.23
1.85-JFD1S12F05	0.30