

SERIES 1mm

Key performance

Impedance: 50Ω

Frequency: DC-110GHz

VSWR: 0-110GHz... 1.38 (max)

Contact Resistance: Center Contact $\leq 4m\Omega$ (DC0.2V,1A)
Housing $\leq 1m\Omega$ (DC0.2V,1A)

Insulation Resistance: $\geq 1200M\Omega$

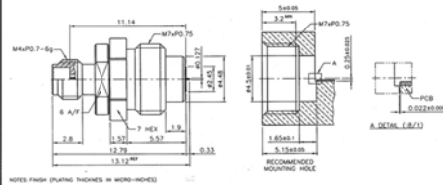
Dielectric Withstanding Voltage: 500V

Material

Housing: Stainless Steel

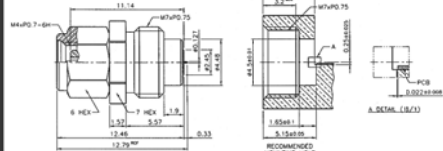
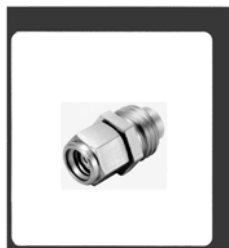
Center Contact: Beryllium Copper

Insulators: PTFE/ULTEM 1000



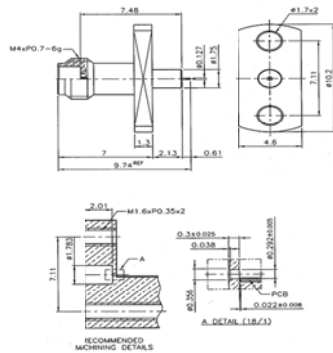
Part number

1.0-KYD10J9



Part number

1.0-JYD10P9



Part number

1.0-KFD10J9