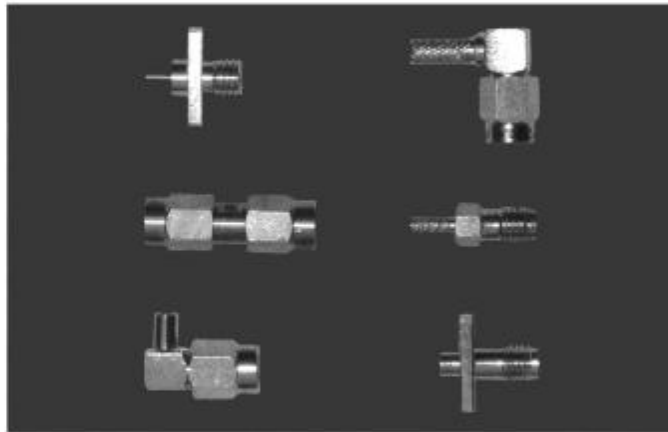


SERIES SSMA RF COAXIAL CONNECTORS



Series SSMA is the first selection for use in millimeter applications. The size is smaller than SMA series while the structure is similar. The SSMA connector is recommended for use up to 40 GHz.

Key performance

Characteristic Impedance : 50Ω

Frequency range : 0~40GHz

Contact resistance :

Center conductor $\leq 5.0m \Omega$

Out conductor $\leq 2.50m \Omega$

Insulation resistance : $\geq 1000M \Omega$

Insulator voltage withstanding : 750V

VSWR : $\leq 1.07 + 0.04\sqrt{f(\text{GHz})}$

Connector durability : 500 cycles

Applicable spec/std : GJB681A(MIL-C-39012)

Material

Center contacts:

Male---brass, gold plated.

Female---beryllium copper, gold plated

Bodies and other metal parts:

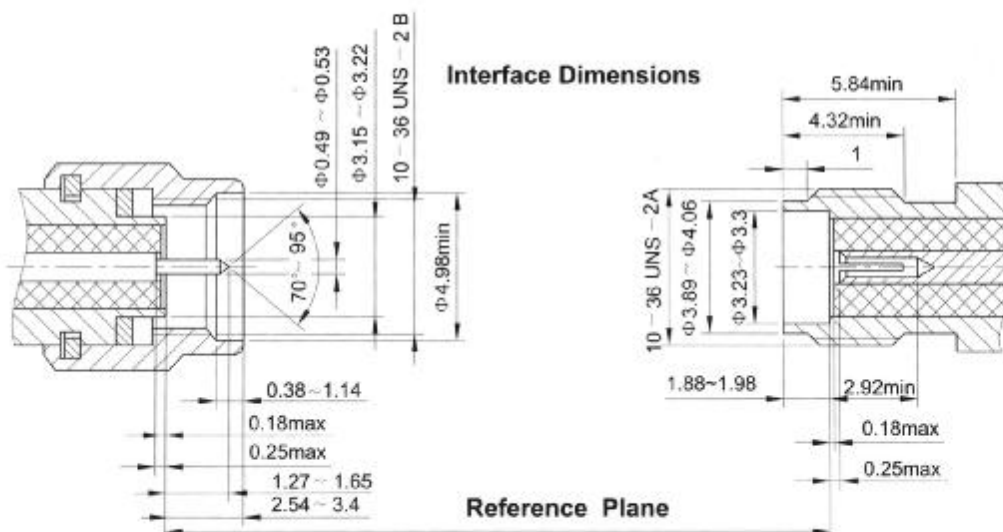
brass, gold plated

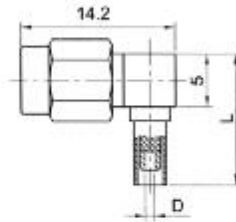
Insulators: Teflon

Crimp ferrule: copper, nickel plated.

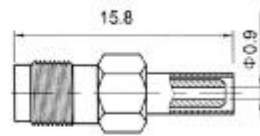
Gasket and seal rings: silicone rubber

Heat-shrink tubing: thermofit plastic.

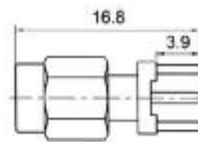




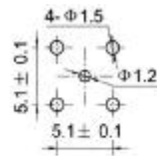
Type	part number	suitable cable	L	D	Note
SSMA-W2	0930-6500	2	12.3	Φ0.9	
SSMA-W3	0930-6501	3	12.9	Φ1.6	



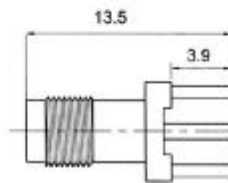
Type	part number	suitable cable	Note
SSMA-K2	0920-6500	2	



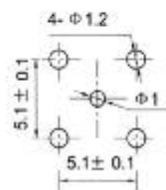
mounting hole



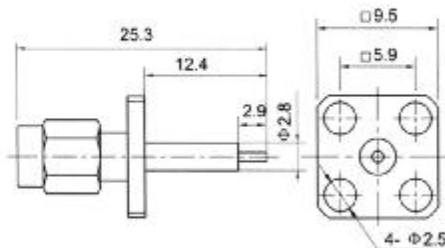
Type	part number	Note
SSMA-JHD	0910-5800	



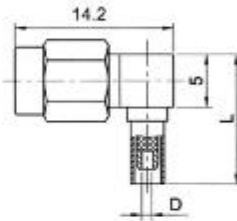
mounting hole



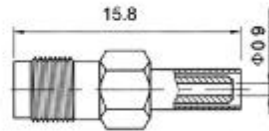
Type	part number	Note
SSMA-KHD	0920-5800	



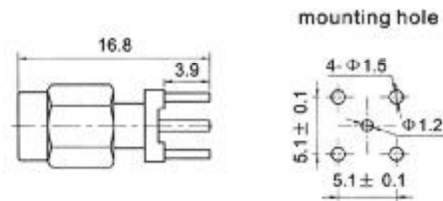
Type	part number	Note
SSMA-JFD	0910-0000	



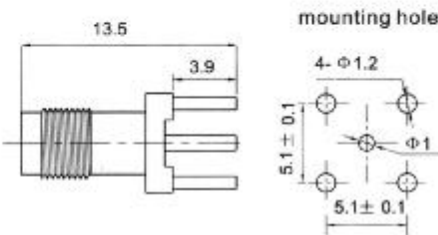
Type	part number	suitable cable	L	D	Note
SSMA-JW2	0930-6500	2	12.3	Φ0.9	
SSMA-JW3	0930-6501	3	12.9	Φ1.6	



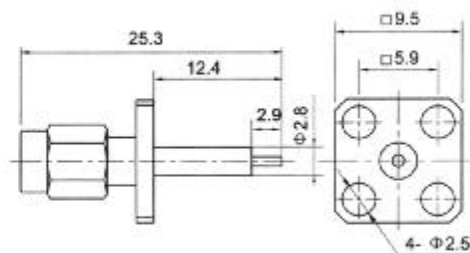
Type	part number	suitable cable	Note
SSMA-K2	0920-6500	2	



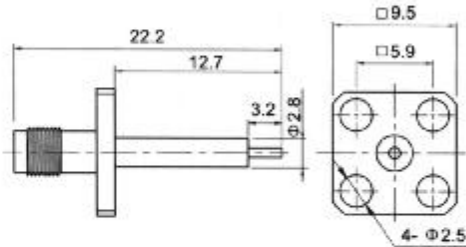
Type	part number	Note
SSMA-JHD	0910-5800	



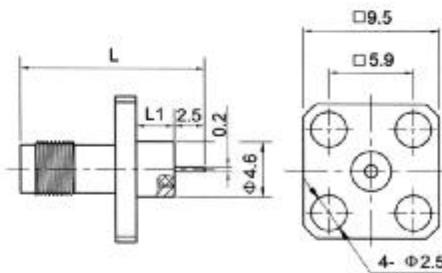
Type	part number	Note
SSMA-KHD	0920-5800	



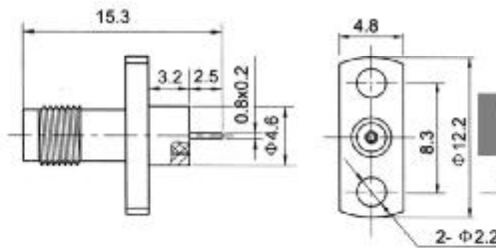
Type	part number	Note
SSMA-JFD	0910-0000	



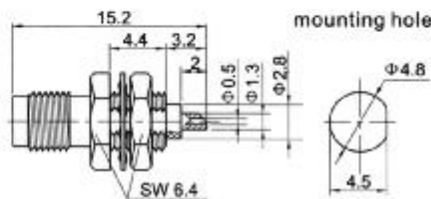
Type	part number	Note
SSMA-KFD	0920-0000	



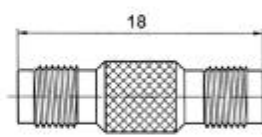
Type	part number	L	L1	Note
SSMA-KFD1	0920-0001	14.3	2.4	
SSMA-KFD2	0920-0002	15.3	3.2	
SSMA-KFD3	0920-0003	16.9	4.8	



Type	part number	Note
SSMA-KFD4	0920-0004	



Type	part number	Note
SSMA-KYD	0910-2800	



Type	part number	Note
SSMA-KK	0900-6900	