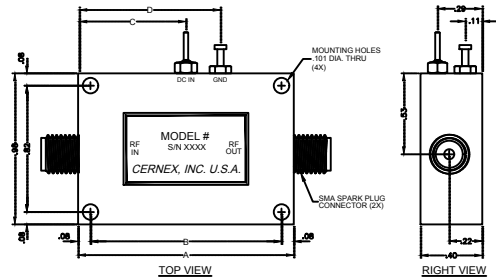
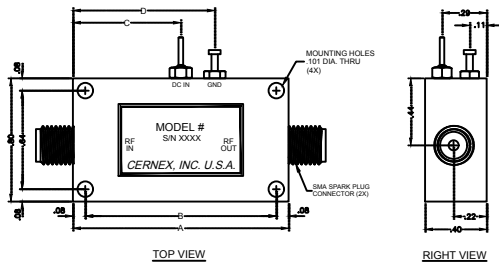


## HNS Series

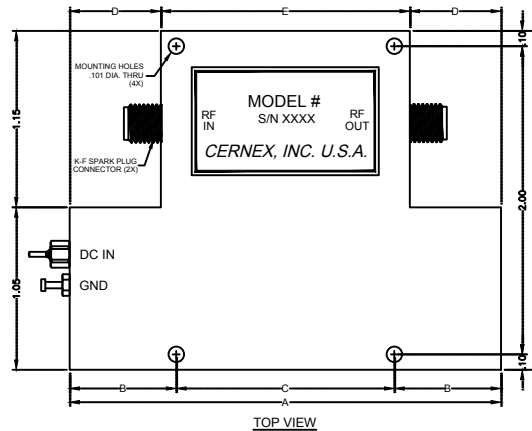
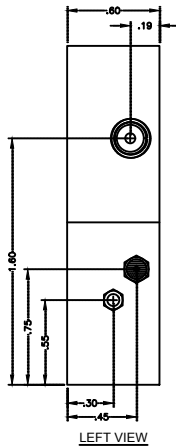
## LNS Series



CASE TYPE	DIMENSIONS			
	A	B	C	D
HNS1	.73	.57	.31	.50
HNS2	.95	.79	.48	.72
HNS3	1.18	1.02	.70	.95
HNS4	1.40	1.24	.70	.92
HNS5	1.62	1.46	.70	.92
HNS6	1.85	1.69	.92	1.15
HNS7	2.07	1.91	.92	1.15
HNS8	2.30	2.14	1.15	1.37
HNS9	2.52	2.36	1.15	1.37
HNS10	2.74	2.58	1.15	1.37
HNS11	2.97	2.81	1.37	1.60
HNS12	3.19	3.03	1.37	1.60
HNS13	3.42	3.26	1.60	1.82

CASE TYPE	DIMENSIONS			
	A	B	C	D
LNS2	.95	.79	.48	.72
LNS3	1.18	1.02	.70	.92
LNS4	1.40	1.24	.70	.92
LNS5	1.62	1.46	.70	.92
LNS6	1.85	1.69	.92	1.15
LNS7	2.07	1.91	1.15	1.37
LNS8	2.30	2.14	1.15	1.37
LNS9	2.52	2.36	1.15	1.37
LNS10	2.74	2.58	1.15	1.37
LNS11	2.97	2.81	1.37	1.60
LNS12	3.19	3.03	1.37	1.60
LNS13	3.42	3.26	1.37	1.60

## CKPS Series



CASE TYPE	DIMENSIONS				
	A	B	C	D	E
CKPS4	2.80	.80	1.20	.70	1.39
CKPS5	2.80	.69	1.42	.59	1.62