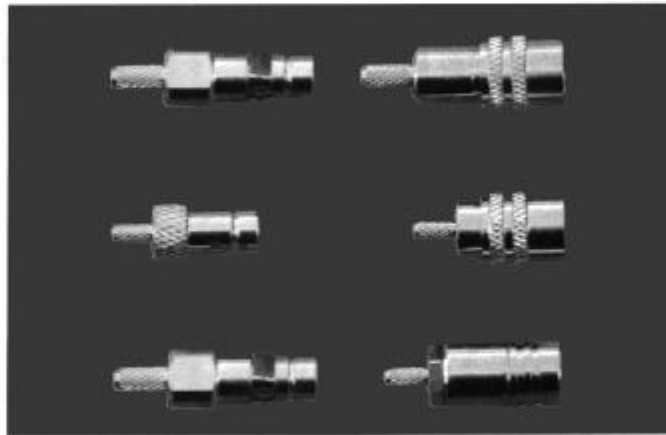


**SERIES SMZ
RF COAXIAL CONNECTORS**



Series SMZ push-pull self-latching style RF coaxial connector is changed based on series SMB.

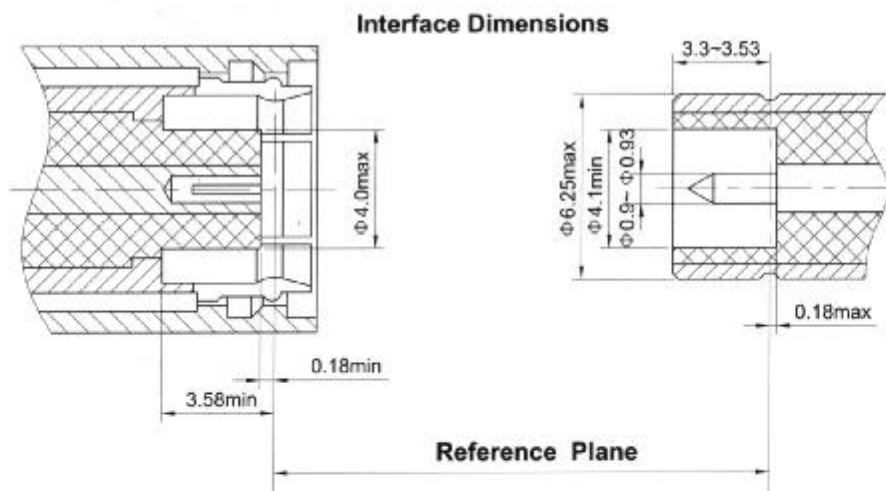
Key performance

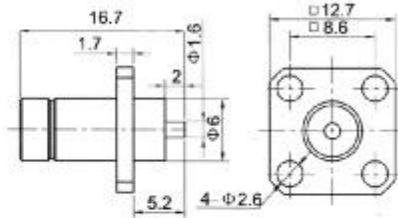
- Characteristic Impedance : 50 Ω
- Frequency range : 0~4GHz
- Contact resistance :
 - Center conductor ≤ 6.0m Ω
 - Out conductor ≤ 2.0m Ω
- Insulation resistance : ≥ 1000M Ω
- Insulator voltage withstanding : 1000V
- VSWR : ≤ 1.30
- Connector durability : 500 cycles

Applicable spec/std : GJB681A (MIL-C-39012)

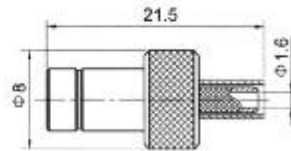
Material

- Center contacts:
 - Male---brass, gold plated.
 - Female---beryllium copper, gold plated
- Bodies other metal parts:
 - brass, gold plated
- Insulators: Teflon
- Crimp ferrule: copper, nickel plated.
- Gasket and seal rings: silicone rubber
- Heat-shrink tubing: thermofit plastic.

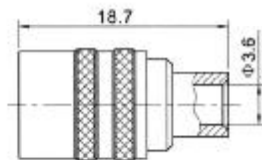




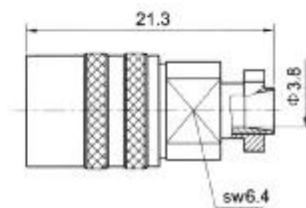
Type	part number	Note
SMZ-JFD	2110-0000	



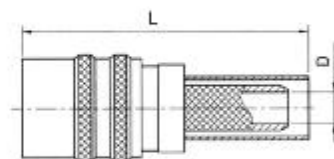
Type	part number	suitable cable	Note
SMZ-J3	2110-6500	3	



Type	part number	Note
SMZ-KB3	2120-6600	



Type	part number	Note
JSMZ-K5	2120-6502	



Type	part number	L	D	Note
SMZ-K4Y	2120-6501	30.2	φ2.3	
SMZ-K5Y	2120-6500	28.5	φ3.1	