

**SERIES SMP  
RF COAXIAL CONNECTORS**



Series SMP is a push-on and snap-on style connector. The advantages are miniature size, light weight, convenient usages and high frequency range. In its snap-on configuration, the SMP interface is available in two levels of detent each with different mate and de-mate forces. The two levels are full detent and limited detent.

**Key performance**

- Characteristic Impedance : 50 Ω
- Frequency range : 0~26.5 GHz
- Contact resistance :
  - Center conductor  $\leq 6.0m\ \Omega$
  - Out conductor  $\leq 2.0m\ \Omega$
- Insulation resistance :  $\geq 1000M\ \Omega$
- Insulator voltage withstanding : 500V
- VSWR :  $\leq 1.25$
- Connector durability : 500 cycles

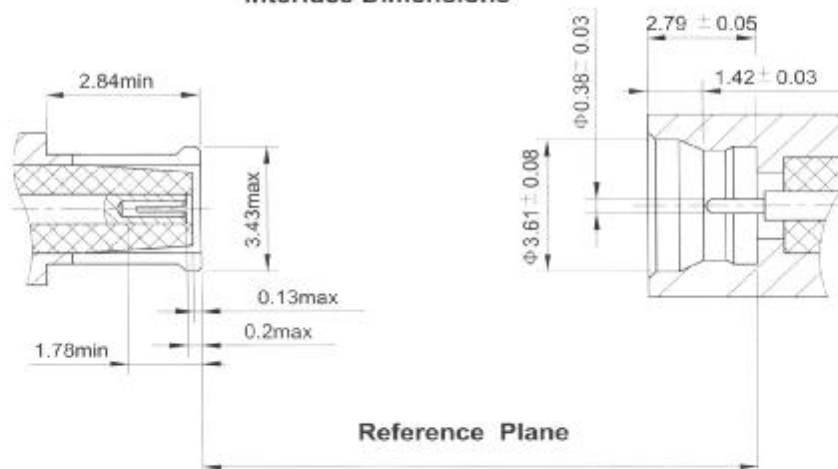
**Application spec/std.:** GJB681A/MIL-C-39012)/CECC22340

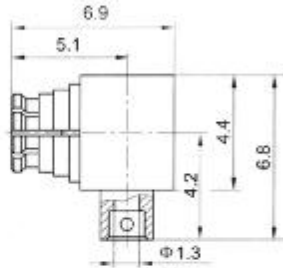
**Applicable sc** MIL-C-39012

**Material**

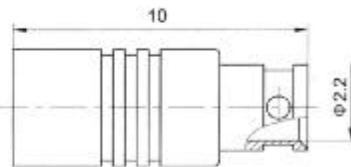
- Center contacts:
  - Male---brass, gold plated.
  - Female---beryllium copper, gold plated
- Bodies and other metal parts:
  - brass, gold plated
- Insulators: Teflon
- Crimp ferrule: copper, nickel plated.
- Gasket and seal rings: silicone rubber
- Heat-shrink tubing: thermofit plastic.

**Interface Dimensions**





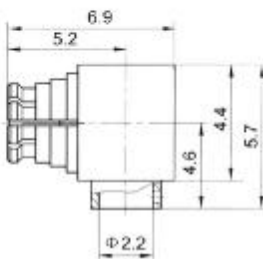
Type	part number	suitable cable	Note
SMP-KWB1	1641-6600	B1	



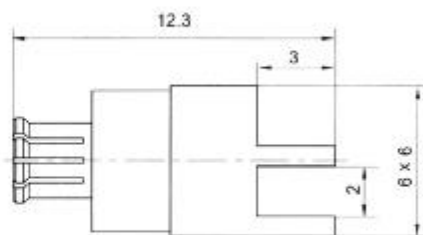
Type	part number	suitable cable	Note
SMP-JB2A	1611-6601	B2	



Type	part number	suitable cable	Note
SMP-KB2	1621-6600	B2	



Type	part number	suitable cable	Note
SMP-KWB2A	1641-6602	B2	



Type	part number	Note
SMP-KHD1	1621-5801	