

SERIES L29 (7/16) RF COAXIAL CONNECTORS



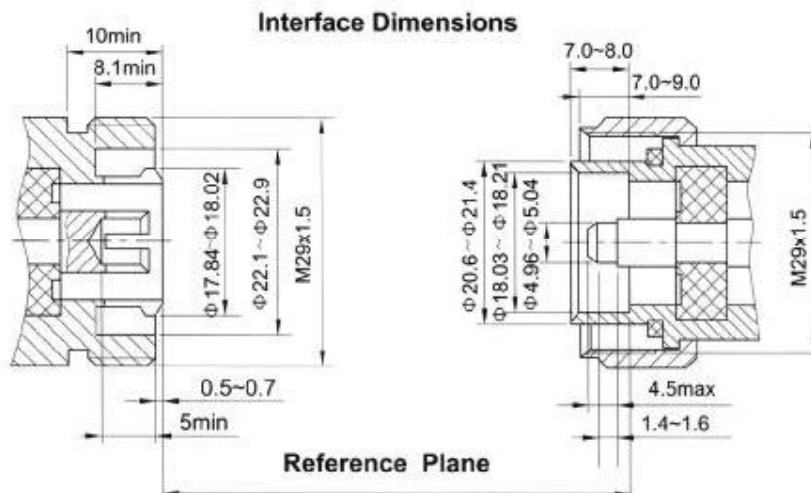
Series L29(7-16) is a screw coupling unit designed specifically to handle high power while suppressing intermodulation products. The L29(7-16) connector is most widely used in communication systems such as mobile phone base stations and radio transceivers.

Key performance

Characteristic Impedance : 50 Ω
 Frequency range : 0~7.5GHz
 Contact resistance :
 Center conductor ≦1.0m Ω
 Out conductor ≦0.5m Ω
 Insulation resistance : ≧10000M Ω
 Insulator voltage withstanding : 2700V
 VSWR : ≦1.25
 Connector durability : 500 cycles
Applicable spec/std : IEC169-4

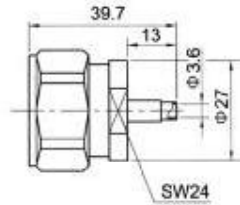
Material

Center contacts:
 Male---brass, gold plated.
 Female---phosphor, gold plated
 Bodies and other metal parts:
 brass, nickel or silver plated
 Insulators: Teflon
 Crimp ferrule: copper, nickel plated.
 Gasket and seal rings: silicone rubber
 Heat-shrink tubing: thermofit plastic.

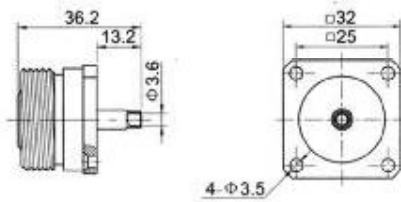


L29 (7/16) SERIES

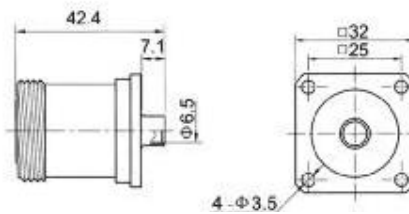
CERNEXWAVE



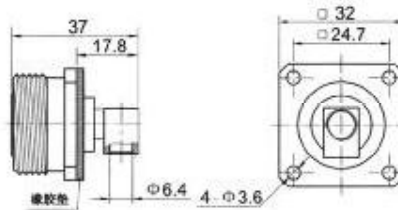
Type	part number	suitable cable	Note
L29-JB3	1212-6601	B3	coupling nut body silver plated



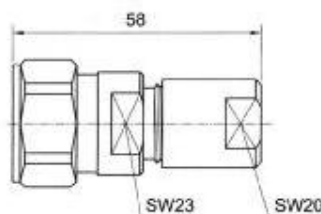
Type	part number	suitable cable	Note
L29-KFB3	1222-1601	B3	body silver plated



Type	part number	suitable cable	Note
L29-KFB5A	1222-1603	B5A	body silver plated



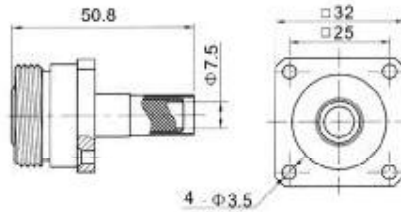
Type	part number	suitable cable	Note
L29-KFWB5A	1246-0001	B5A	Body, SUCO plated
L29-KFWB5A-1	1242-1602	B5A	Body silver plated



Type	part number	suitable cable	Note
L29-J8B	1216-6501	8	coupling nut - body SUCO plated

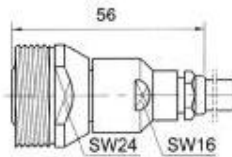
L29 (7/16) SERIES

CERNEXWAVE



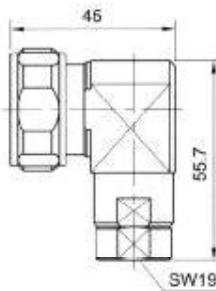
Type part number suitable cable Note

L29-KF213	1221-1701	7	body nickel plated
-----------	-----------	---	--------------------



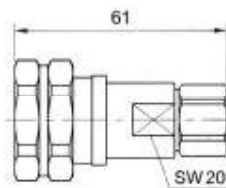
Type part number suitable cable Note

L29-K501	1222-6701	501	body nickel plated center conductor ,without solder
L29-K511	1221-6702	511	body nickel plated center conductor ,without solder



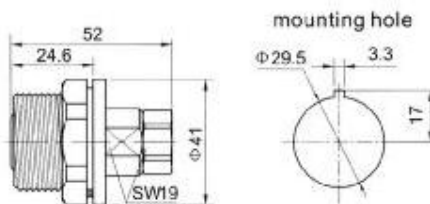
Type part number suitable cable Note

L29-JW533	1232-6701	533	coupling nut/body silver plated center conductor ,without solder
-----------	-----------	-----	---



Type part number suitable cable Note

L29-J533A	1212-6702	533	body ,silver plated coupling nut. nut. nickel plated center conductor ,without solder
-----------	-----------	-----	---

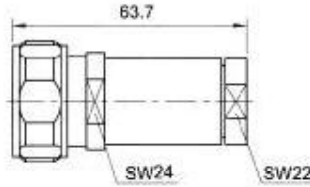


Type part number suitable cable Note

L29-KY533	1212-6702	533	body ,silver plated center conductor ,without solder
-----------	-----------	-----	---

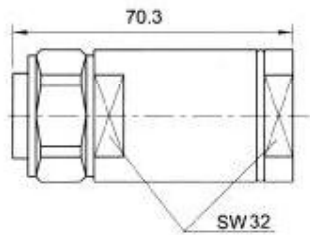
L29 (7/16) SERIES

CERNEXWAVE



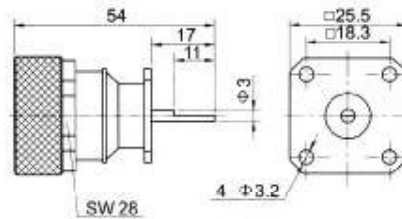
Type part number suitable cable Note

L29-J534 1211-6701 534 coupling nut, nut, silver plated
body nickel plated



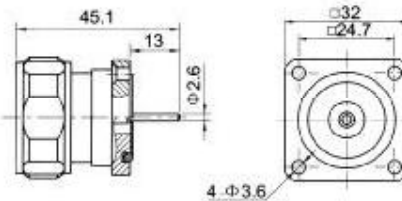
Type part number suitable cable Note

L29-J554 1211-6703 554 coupling nut/body nickel plated
silver plated



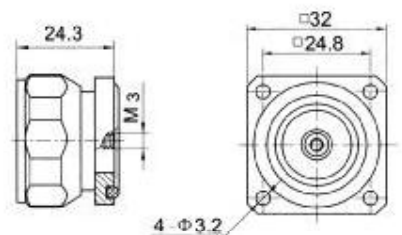
Type part number suitable cable Note

L29-JFD5 1211-0005 coupling nut/body nickel plated



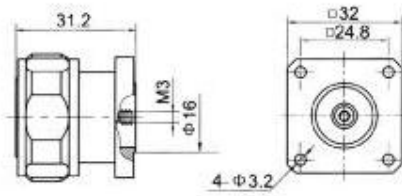
Type part number suitable cable Note

L29-JFD10 1211-0010 coupling nut - body, SUCO plated



Type part number suitable cable Note

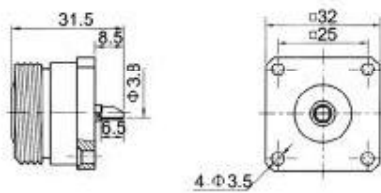
L29-JFD12 1212-0001 body, silver plated
coupling nut, nickel plated



Type part number suitable cable Note

L29-JFD14 1212-0002

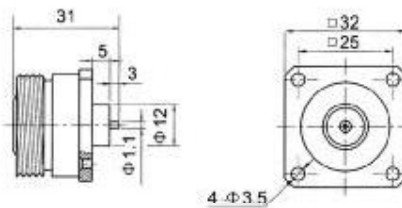
body, silver plated
coupling nut, nickel plated



Type part number suitable cable Note

L29-KF 1221-1901

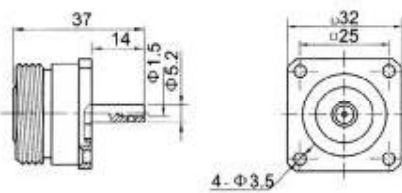
body, nickel plated



Type part number suitable cable Note

L29-KFD 1221-0001

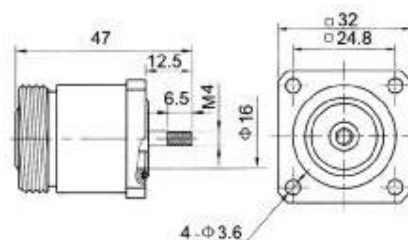
body, nickel plated



Type part number suitable cable Note

L29-KFD2 1202-0002

body, silver plated



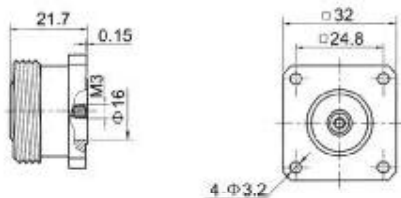
Type part number suitable cable Note

L29-KFD5 1222-0005

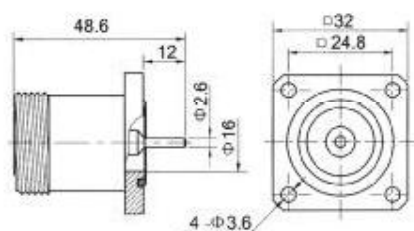
silver plated

L29 (7/16) SERIES

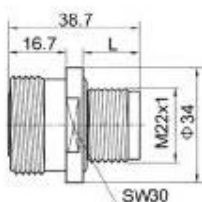
CERNEXWAVE



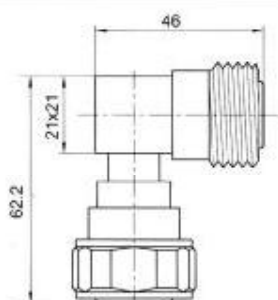
Type	part number	suitable cable	Note
L29-KFD26	1222-0010		silver plated



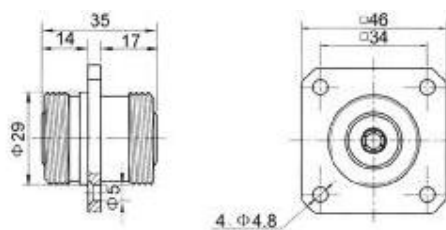
Type	part number	suitable cable	Note
L29-KFD28	1226-0005		body, SUCO plated



Type	part number	suitable cable	L	Note
L29-KYD1	1222-2801		17	silver plated
L29-KYD1A	1222-2802		17.2	silver plated



Type	part number	suitable cable	Note
L29-JWK	1202-5904		Body/coupling, silver plated



Type	part number	suitable cable	Note
L29-KFX1	1201-1901		nickel plated